



Leadership
styles

Leadership
theories

Leadership
traits

LEADERSHIP

an introduction



Name: _____

Form: _____

L.O. Identify leadership experiences

Your experience of leadership

Task 1

Give 3 examples of when you have had a leadership role.

1. Example of leadership

2. Example of leadership

3. Example of leadership

L.O. Identify challenges faced as a leader

Challenges of leadership

Task 2

What challenges did you face when you were a leader?
Be ready to share with the class.

1. Challenges of leadership

2. Challenges of leadership

3. Challenges of leadership

4. Challenges of leadership

L.O. Identify future leadership opportunities

Leadership opportunities

Task 3

In pairs, list 3 leadership opportunities you will have in the future.

1. Future leadership opportunities

2. Future leadership opportunities

3. Future leadership opportunities

L.O. Explain what leadership is, giving examples.

What is leadership?

Read the quotes about leadership



1 *A leader is one who
knows the way,
goes the way
and shows the way.*
John C. Maxwell

2 *Leadership is action
not position.*
Unknown

3 *A genuine leader is
not a searcher for
consensus but a
moulder of
consensus.*

4 *Lead from the back
and let other believe
they are in front.*
Nelson Mandela

5 *A boss has the title,
a leader has the
people.*
Simon Sinek

6 *Leadership is based
on inspiration, not
domination; on
cooperation, not
intimidation.*
William Arthur Wood

L.O. Explain what leadership is, giving examples

Task 4

Choose 3 quotes and explain in your own words what they mean.

Quote _____

Quote _____

Quote _____

PREVIEW

L.O. Identify good examples of leadership

Examples of leadership

Task 5

Choose 3 people (leaders) and give an example of what makes them a good leader.

1. Person _____

What makes the person a good leader?

2. Person _____

What makes the person a good leader?

3. Person _____

What makes the person a good leader?

L.O. Identify styles of leadership

Styles of leadership

There are four main types of style of leadership



Autocratic

- . A leader who makes decisions on their own
- . People do as they are told
- . Little or no collaboration (working with others)
- . Can make quick decisions

Democratic

- . A leader who consults others, asks for feedback
- . Encourages others to make decisions, be creative and innovate
- . Can take a long time to make decisions
- . Need others to have the skills needed

Laissez-faire

- . A leader who delegates tasks to others - based on their strengths
- . Motivates others to make decisions
- . Things can go wrong if people are unable to their job
- . Not good if people need support or guidance

Transactional

- . A leader who offers incentives (rewards) for success and punishments for failure
- . Can motivate some people - clear goals and targets
- . Clear what people need to do
- . Can limit creativity as people don't

L.O. Identify advantages and disadvantages of different styles of leadership

Styles of leadership

Task 6

Give the advantages and disadvantages of each style of leadership.

Autocratic

Advantages

Disadvantages

Democratic

Advantages

Disadvantages

Laissez-faire

Advantages

Disadvantages

Transactional

Advantages

Disadvantages

L.O. Identify advantages and disadvantages of different styles of leadership

Task 7

Which style of leader would you like to work for?

Style of leadership: _____

Why would you prefer to work for this style of leader?

Task 8

Which style of leader would you NOT like to work for?

Style of leadership: _____

Why would you NOT work under this style of leadership?

L.O. Identify your own style of leadership

Styles of leadership - self assessment

Task 9

Complete the self assessment below

Rate each statement 1 - 5. 1 = never - 5 = always

1. Make my own decisions
2. Let others make decisions
3. Try to come up with group decision
4. Expect others to follow my orders
5. Set clear targets
6. Stay in the background
7. Suggest ideas for others to discuss
8. Encourage others to work hard by offering incentives
9. Expect everyone to do as I say all the time
10. Let things happen
11. Encourage others to come up with ideas
12. Make sure everyone understands their role
13. Give others the authority
14. Make the final decision
15. Punish people for bad performance
16. Have fun while sharing ideas

Red
total

Green
total

Black
total

Blue
total

L.O. To review your own style of leadership

Styles of leadership - self assessment

Your highest total is your style of leadership

Red = Autocratic

Black = Democratic

Green = Laissez-faire

Blue = Transactional

Task 10

Based on the self assessment, answer the questions below.

1. Do you agree with the self assessment? Explain your answer.

2. Why do you think it is useful to know your leadership style?

L.O. Explain which styles of leadership suit different situations

Styles of leadership

Certain situations might lead to a style of leaderships being better suited than another.

Task 11

Which style of leadership would you expect to find for these jobs?

Army general

Style: _____

Explain why you chose that style:

Manager of app development - new innovative app needed for large company

Style: _____

Explain why you chose that style:

Sales manager - sales are down and the team are not working hard enough

Style: _____

Explain why you chose that style:

L.O. Explain which styles of leadership suit different situations

Styles of leadership

Think about the different styles of leadership.

Task 12

Which style of leader do you think you will be?

Your leadership style

Style: _____

Explain why you chose that style:

PREVIEW

L.O. Identify key leadership traits

Leadership traits

Some key traits have been identified for leaders.



Delegate

Encourages others to be responsible

Good listener/empathic

Understands others' views

Vision

Knows what (s)he wants for the future

Honest/Trustworthy

Tells the truth & is honest with people

Competence/Intelligence

Able to do the job

Sense of humour

Can be funny at times

Generous

Does (s)he give time to others to help

Fairness

Treat people the same - no favourites

Dedicated

Works hard & believes in the job

Inspiring

Motivates others - people want to work

Confident/Assertive

Believe in themselves & can be strong

Openness

Listens to others & new ideas

L.O. Identify key leadership traits + rank the different traits

Leadership traits

Task 13

List the traits in under of importance - in your opinion, 1 most, 9 least.

1

2

3

4

5

6

7

8

9

L.O. Identify key leadership traits + explain their importance

Leadership traits

Task 14

Explain why you have chosen the top 3 traits

1. Trait: _____

Explain why you chose this trait as the most important.

2. Trait: _____

Explain why you chose this trait as the second most important.

1. Trait: _____

Explain why you chose this trait as the third most important.

L.O. Identify your strengths and weaknesses as a leader

Leadership traits

Task 15

Self Review: score yourself for each trait 10 the highest - 1 the lowest

Leadership trait	Score /10	Explain your score
Vision		
Delegate		
Good listener /		
Competence /		
Honest / Truthful		
Generous		
Sense of humour		
Fairness		
Dedicate		
Confident / Assertive		
Inspiring		
Openness		

L.O. Identify your strengths and weaknesses as a leader

Leadership traits: self review

Task 16a

List your top 3 leadership traits and explain why you are good in this area.

Strength

1. Trait: _____

Explain why you think this is a strength for you.

Strength

2. Trait: _____

Explain why you think this is a strength for you.

Strength

3. Trait: _____

Explain why you think you are good at this.

L.O. Identify your strengths and weaknesses as a leader

Leadership traits: self review

Task 16b

List your weakest traits and suggest how you could improve them.

Weakness

1. Trait: _____

Explain why you think this is a weakness and suggest how you could improve this trait.

Weakness

2. Trait: _____

Explain why you think this is a weakness and suggest how you could improve this trait.

Weakness

3. Trait: _____

Explain why you think this is a weakness and suggest how you could improve this trait.

L.O. Identify key leadership traits from a real life example

Leadership traits

The movie 'Coach Carter' is a good example of a leader showing a range of different traits.

Task 17

For each trait listed give an example from the movie 'Coach Carter'



"I came to coach basketball players, and you became students. I came to teach boys, and you became men."
Coach Carter

COACH CARTER: AN EXAMPLE OF LEADERSHIP

For each area of leadership give one or two examples from the film.

VISION

OPEN

ASSERTIVE

INSPIRING

L.O. Identify key leadership traits from a real life example

DEDICATED

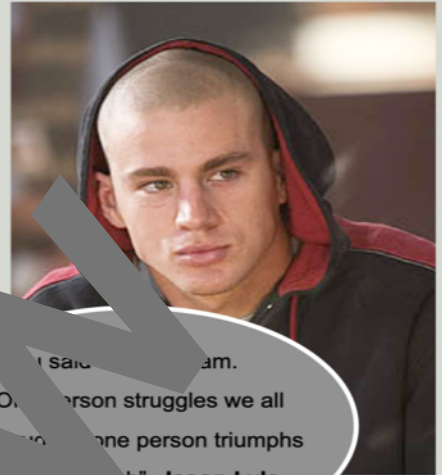
FAIR

HONEST

COMPETENT

FUNNY

TEAM BUILDING EXAMPLES



"I said, 'I am. One person struggles we all struggle. One person triumphs we all triumph.' Jason Lyle

L.O. Identify key leadership traits from a real life example

Leadership traits

Task 18

Explain what made Coach Carter such a good leader - use examples.

PREVIEW

L.O. Identify key leadership traits from a real life example



PREVIEW

L.O. Identify key leadership traits from a real life example

Leadership traits

Task 19

Research your own leader and her/his traits and list them below.



List the websites you used:

- 1.
- 2.
- 3.
- 4.

1.

2.

3.

4.

6.

7.

8.

L.O. Identify key leadership traits from a real life example

Task 20

In your own words, explain what makes/made your chosen leader such an effective leader.

PREVIEW

L.O. Identify key leadership traits from a real life example

Leadership traits

Maybe in the future we can create the perfect AI leader, combining the best traits of different people!

So for each trait chose a person that best suits that trait.

There are some picture examples here, but you get higher marks for using your own examples.

Think about world leaders, family, friends, teachers etc.



Task 21

For each leadership trait give an example of person with the trait.

Vision

Knows what (s)he wants for the future

Person:

Competence/Intelligence

Able to do the job

Person:

Delegate

Encourages others to be responsible

Person:

Generous

Does (s)he give time or resources to help others?

Person:

Dedicated

Works hard & believes in the project

Person:

Confident/assertive

Believe in themself & can be strong

Person:



Good listener/empathic

Understands others' views

Person:

Honesty/Trustworthy

Tells the truth and is honest with people

Person:

Sense of humour

Can be funny at times

Person:

Fairness

Treat people the same - no favourites

Person:

Inspiring

Motivates others - people want to work

Person:

Openness

Listens to others & new ideas

Person:

